

Yame Inmap

Icon descriptions

- ... Learn/Experience
- ... Souvenirs/Gifts
- ... Gourmet
- ... Accommodation
- ... Sightseeing
- ... History



1 Iwatoyama Tumulus



This is the largest keyhole-shaped burial mound in northern Kyushu, built in the first half of the 6th century. It boasts a total length of 135m and numerous funerary stone statues and haniwa (hollow clay figurines) of people, horses, and other items have been excavated here. Some of these have been designated a national or prefectural cultural property.

2 Yame Traditional Crafts Center



The facility showcases Yame's proud traditional crafts, including works of overwhelming size, such as a huge stone lantern that is 10.5m tall, a 3m high jumbo lantern, and a large Buddhist altar that is 6.5meters tall.

3 Yame "Tokimeki" Local Products Shopping Center



This center offers a wide selection of Yame City specialty products such as Yame tea, local sake, and famous confectioneries. The Yame matcha soft ice cream is very popular.

4 Bengala Village



From hot springs to restaurants and cafes featuring local ingredients, a craft beer brewery, fitness gym, hair salon, and massage service... This well-equipped facility offers a full day of enjoyment for children and adults alike.

5 Michi-no-Eki Local Products Center Tachibana



A local farmers' market. A great place to find seasonal specialties and processed foods of Yame City. The food court, Shochikubai, offers delicious dishes that make generous use of seasonal and local ingredients.

6 Shiraki-no-Sato (The Former Ouchi Residence)



This is the birthplace of Ouchi Chozo, a politician who devoted himself to promoting friendship and goodwill between Japan and China from the Meiji to early Showa period. Designated a cultural property by Yame City, it serves as a hub for preserving local culture and fostering community interaction.

7 Daniel Inouye Museum



A tourist exchange facility celebrating Daniel Ken Inouye, a Japanese-American politician who was a bridge of friendship between Japan and the U.S. The facility includes a cafe and a shop where you can enjoy local ingredients and Hawaiian cuisine.

8 Kurogi Grand Wisteria

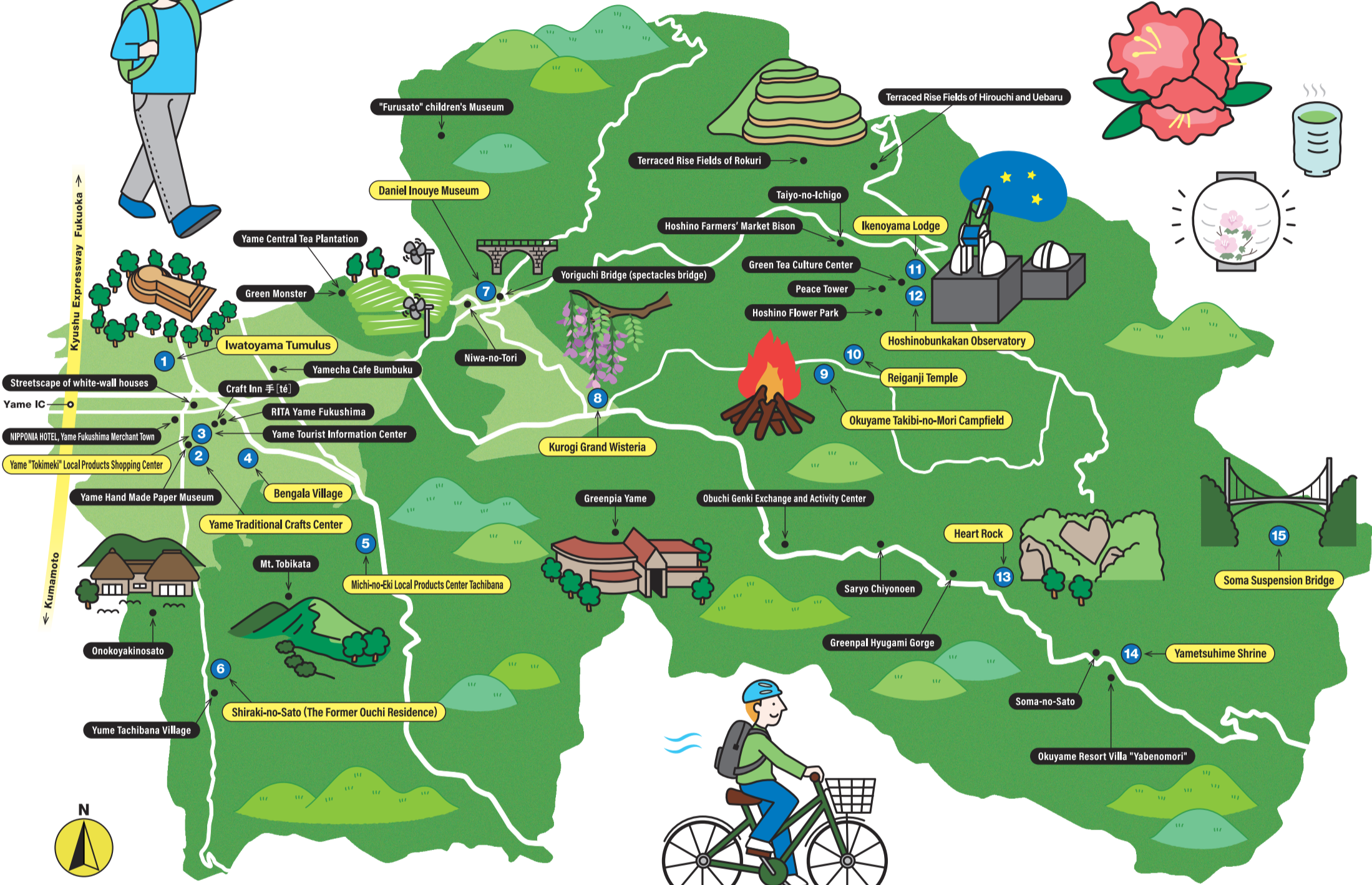


This massive wisteria vine within the grounds of Susano Shrine is reportedly 600years old, having surviving numerous wars and fires. In 1928 it was designated a national Natural Monument.

9 Okuyame Takibi-no-Mori Campfield



A facility offering a variety of tree-related experiences including work-shops using trees, centered on the theme of connecting with trees, learning from trees, and bonding with trees through camping. You can also just come for the day.



10 Reiganji Temple



The grounds of this temple feature a very unusual naturally formed rock. It is thought that long ago, the temple was a training ground for Shugendou mountain ascetics. This is also said to be the birthplace of Yame tea. The teaching of tea cultivation and tea-making started after tea seeds were brought here from Ming China (1368-1644).

11 Ikenoyama Lodge



A traditional accommodation facility where you can enjoy the tranquility of the mountains and delicious cuisine while feeling its long history. As well as Yame's famous tea leaves, this is a great place to enjoy delicious dishes made with seasonal ingredients unique to Yame.

12 Hoshinobunkakan Observatory



This public astronomical observatory is equipped with one of the biggest telescopes in Kyushu, with an aperture of 100cm. Hotel guests here can enjoy some leisurely stargazing at night.

13 Heart Rock



Located in the Hyugamikyo Gorge, this is the largest heart-shaped rock in Japan. There is legend that the gods of Hyuga were drawn to Japan by the rock's beauty. The bridge overlooking the rocks is home to a "Bell of Happiness" that is considered auspicious for the blossoming of love.

14 Yametsuhime Shrine



This shrine, dedicated to the goddess Yametsuhime, is where the name Yame originates. Fukuoka Prefecture has designated this shrine an Intangible Folk Cultural Property. In autumn, the shrine is enveloped in brilliantly colored maple leaves that give the place a mystical atmosphere.

15 Soma Suspension Bridge



The large suspension bridge in a natural park in the mountains of Yame City is said to be the best "swinging bridge" in Fukuoka. It is a slim pedestrian bridge, 150 m long and just 120 cm wide. Enjoy the wonderful mountain village scenery stretching out below you.

Immerse yourself in Yame tea! A recommended 3-hour cycling course!

START

Yame Tourist Information Center



Share cycling

Approx. cycling time: 20min (4.5 km)

Yamecha Cafe Bumbuku

Lunch & commemorative photos (Stop time: Approx. 50 min.)



Approx. cycling time: 20min (3.5 km)

Thanks for returning the bike!



Approx. cycling time: 30min (7km)

Green Monster

Take a break at the cafe (Stop time: 20min.)



On foot

Yame Central Tea Plantation

Enjoy the superb views and take a commemorative photo (Stop time: 20min.)



Car rental & taxi service (within Yame tel. area code 0943)

- Toyota Rentalease Fukuoka Yame Store (807-1 Motomura, Yame City) Tel: 24-0100
- Yame Rent a Car (140-6 Tatsugahara, Yame City) Tel: 24-3315
- Kato Rent a Car (1624-7 Kurogimachi Honbun, Yame City) Tel: 42-0426
- Nikoniko Yahime Taxi Tel: 23-0909
- Hoshino Taxi Tel: 52-2027
- Daimaru Taxi Tel: 37-0045
- Kawashima Taxi Tel: 42-2124

Only Saturdays, Sundays and public holidays! 1-day unlimited ticket

- Eligible routes: All Horikawa Bus routes
- Eligible people: Anyone (presenting ticket)
- Price: Adult ¥1,000 / Child ¥500 (no other discounts)
- Availability/validity: Saturdays, Sundays and public holidays (for one day only on day of purchase)
- Place of sale: At bus company (Also at Fukushima and Hainuzuka waiting areas on Saturdays)
- Inquiries: Horikawa Bus, Tel: 0943-23-6128

Share cycles

The COGICOGI SMART! app allows you to rent and return bicycles at your convenience and freely enter and leave ports (bicycle parking areas) for drop-off.

- Ports
- Yame Tourist Information Center (2-129 Motomachi, Yame City)
 - Yame Interchange Park & Ride Parking Lot (431-3 Murooka, Yame City)
 - Nishitetsu Fukushima bus stop (379-1 Motomura, Yame City)

For more information, click here.

